






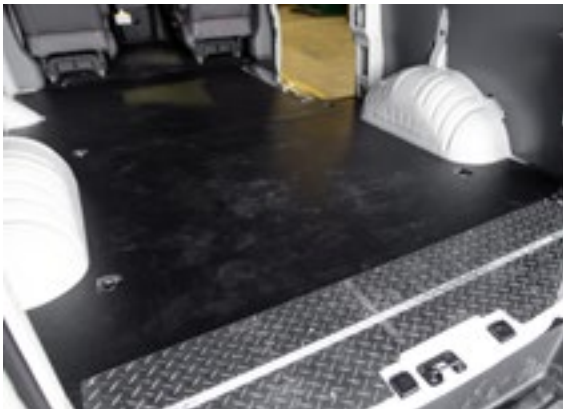


# INTERIOR PROTECTION FOR GM VEHICLES

**LEGEND**  **FLEET SOLUTIONS**

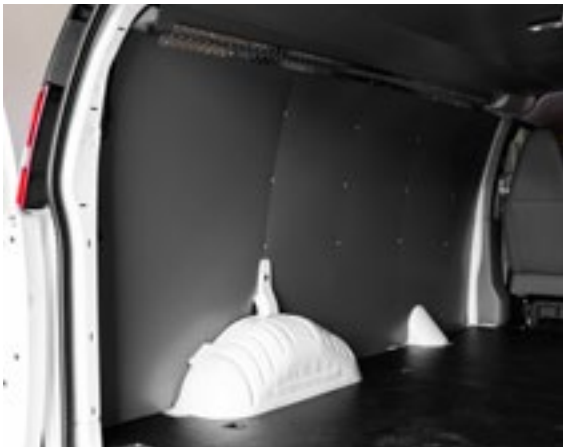
# TAKING UPFITS TO THE **NEXT LEVEL**

-  **Safety**  
Non-slip, ergonomic working conditions for employees
-  **Efficiency**  
Enables ease of loading and improves operating conditions for technicians
-  **Increased re-sale**  
Enhanced vehicle condition at end of vehicle life cycle
-  **Puncture-resistance**  
Protects vehicles from costly dents and damage
-  **Sound-deadening**  
Dampens rattling in cargo area and reduces road noise entering the vehicle
-  **Load management**  
Reduces hazards from shifting cargo
-  **Cost-effective**  
Higher quality products at extremely competitive prices



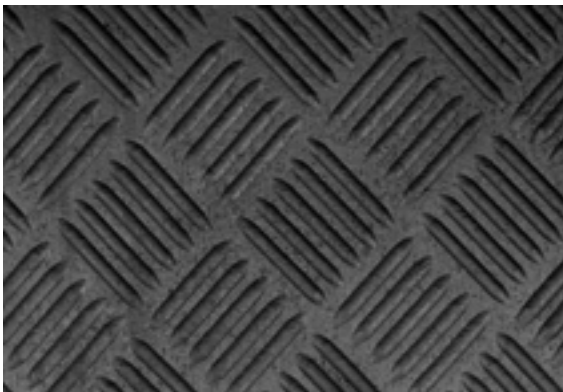
## RIGID FLOORS

- Durability – protects vehicle floor from impact and puncture damage
- Safety – Anti-slip top surface reduces slips, trips, and injury claims
- Efficiency – provides a flat, durable, and safe surface for technicians to work on
- With durable aluminium sill plates



## INTERIOR LINERS

- Durability – protects against the roughest wear and tear on van panels
- Increase Resale Value – prevent van panel and van wrap damage, vehicles in excellent condition at end of life cycle
- Temperature Control – liner insulation creates thermal barrier
- Sound Deadening – reduce road noise



## RUBBER MATS

- Ultra non-slip rubber is hardwearing and easy to clean.
- Flexibility and precision one-piece construction make for simple installation/removal.
- Incredible traction for keeping cargo in place
- One piece mat; no joints
- Most cost-effective flooring option



GMC Savana/  
Chevy Express RWB



GMC Savana/  
Chevy Express EWB





**FIND YOUR  
NEAREST DEALER**

[www.legendfleet.com/dealer-locator](http://www.legendfleet.com/dealer-locator)



**RIGID FLOORS. RUBBER MATS. INTERIOR LINERS.**



The image shows the interior of a truck cab. On the left, there is a large window looking out onto a bright, overexposed area. The floor is dark and has a white, dome-shaped protective cover in the center. The walls are dark and have some rivets or screws. The ceiling has recessed lighting. The overall tone is dark and industrial.

# PROTECT YOUR INVESTMENT

Legend Fleet Solutions  
56957 Hwy 3 West  
Tillsonburg, Ontario, N4G 4G8 Canada  
W [www.legendfleet.com](http://www.legendfleet.com) E [info@legendfleet.com](mailto:info@legendfleet.com)  
P 519 688 1043 TF 866 223 2256