

# INTERIOR PROTECTION FOR RAM VEHICLES



**RAM**

**LEGEND** **FLEET SOLUTIONS**



# TAKING UPFITS TO THE **NEXT LEVEL**

-  **Safety**  
Non-slip, ergonomic working conditions for employees
-  **Efficiency**  
Enables ease of loading and improves operating conditions for technicians
-  **Increased re-sale**  
Enhanced vehicle condition at end of vehicle life cycle
-  **Puncture-resistance**  
Protects vehicles from costly dents and damage
-  **Sound-deadening**  
Dampens rattling in cargo area and reduces road noise entering the vehicle
-  **Load management**  
Reduces hazards from shifting cargo
-  **Cost-effective**  
Higher quality products at extremely competitive prices





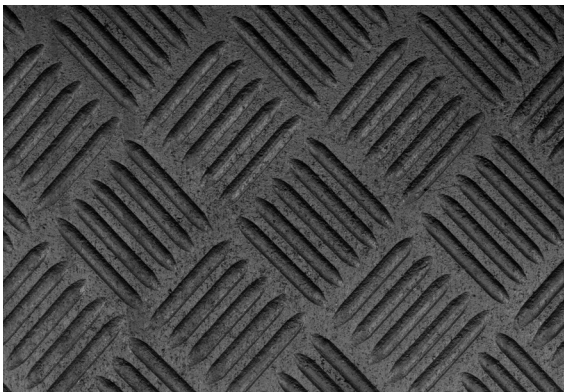
## RIGID FLOORS

- Durability – protects vehicle floor from impact and puncture damage
- Safety – Anti-slip top surface reduces slips, trips, and injury claims
- Efficiency – provides a flat, durable, and safe surface for technicians to work on
- With durable aluminium sill plates



## INTERIOR LINERS

- Durability – protects against the roughest wear and tear on van panels
- Increase Resale Value – prevent van panel and van wrap damage, vehicles in excellent condition at end of life cycle
- Temperature Control – liner insulation creates thermal barrier
- Sound Deadening – reduce road noise



## RUBBER MATS

- Ultra non-slip rubber is hardwearing and easy to clean.
- Flexibility and precision one-piece construction make for simple installation/removal.
- Incredible traction for keeping cargo in place
- One piece mat; no joints
- Most cost-effective flooring option



## WHEEL WELL COVERS

- Protection - loading cargo in and out of the van, the bare wheel wells are one of the first things to dent and damage.
- Decrease Road Noise - significantly deaden loud wheel and road noise by closing in wheel wells with extra padding
- Thermal Barrier with insulation



ProMaster City (122" WB)



ProMaster 118" WB



ProMaster 136" WB



ProMaster 159" WB



ProMaster 159" Extended WB

**FIND YOUR  
NEAREST DEALER**

[www.legendfleet.com/dealer-locator](http://www.legendfleet.com/dealer-locator)





**RIGID FLOORS. RUBBER MATS. INTERIOR LINERS.**





The background of the advertisement is a photograph of the interior of a white van. The view is from the side of the open sliding door, looking into the cargo area. A black floor mat covers the floor. A metal step plate with a diamond-plate pattern is visible at the bottom of the door frame. The white interior panels of the van are visible on the left and right sides. The text "PROTECT YOUR INVESTMENT" is overlaid in the center-left of the image.

# PROTECT YOUR INVESTMENT

Legend Fleet Solutions  
56957 Hwy 3 West  
Tillsonburg, Ontario, N4G 4G8 Canada  
W [www.legendfleet.com](http://www.legendfleet.com) E [info@legendfleet.com](mailto:info@legendfleet.com)  
P 519 688 1043 TF 866 223 2256